



INSTRUCTION BULLETIN

No. 3779

Machine: 5700

(serial #'s 0 thru 4131)

Published: 2-96/00

System: SCRUBBING

NOTE: DO NOT DISCARD the Parts List from the Instruction Bulletin. Place the Parts List in the appropriate place in your machine manual for future reference. Retaining the Parts List will make it easier to reorder individual parts and will save you the cost of ordering an entire kit.

NOTE: Numbers in parenthesis () are reference numbers for parts listed in Bill of Materials.

Installation Instructions for Kit number 222799

SYNOPSIS / PROBLEM:

This kit contains the parts needed to install a new squeegee pivot bearing and pivot plate on the model 5700 scrubber. The way the handle pivot assembly was installed at the factory may allow the pivot bearing to turn in the housing and damage the hole--ultimately causing slop in the squeegee lift handle. The new bearing and plate will eliminate this problem.

Please follow step-by-step instructions.

SPECIAL TOOLS / CONSIDERATIONS: Right angle drill, .156 in. diameter drill bit.

(Estimated Time to complete: 1 hour)

PREPARATION:

(Refer to FIG. 1)

FOR SAFETY: Before leaving or servicing machine, stop on level surface and set parking brake. Then turn off machine and remove key.

1. Disconnect battery cables from machine.



WARNING: Always disconnect battery cables from machine before working on electrical components.

2. Remove the two M8 hex screws holding the top of the instrument panel to the electrical panel.
3. Tilt the instrument panel assembly back until the lanyard strap is tight. (Refer to FIG. 1)
4. Remove the squeegee lift handle and bushings. (Refer to FIG. 1)
5. Remove the bolt that holds the locking bar, clamp, and lanyard strap to the movable housing.
6. Slide the movable housing up far enough to gain access to the squeegee pivot area.

NOTE: Be careful not to pull too hard on the wires leading to the components in the movable panel.

7. Use the template provided and center it over the 1 in. diameter hole in the shroud. (Refer to FIG. 1)
8. Use the .156 in. drill bit and a right angle drill or a small electric drill to drill two holes through the small holes in the template. Remove the template. (Refer to FIG. 1)

INSTALLATION:

1. Place the flange bearing (1) and the pivot plate (2) on the inside of the control panel.
(Refer to FIG. 1)
2. The notch in the bearing (1) should line up with the dimple on the plate (2). (Refer to FIG. 1)
3. Hold both parts in place while installing the two rivets (3). The bearing should move freely after installing the rivets. (Refer to FIG. 1)
4. Reinstall the squeegee lift handle on the machine. (Refer to FIG. 1)

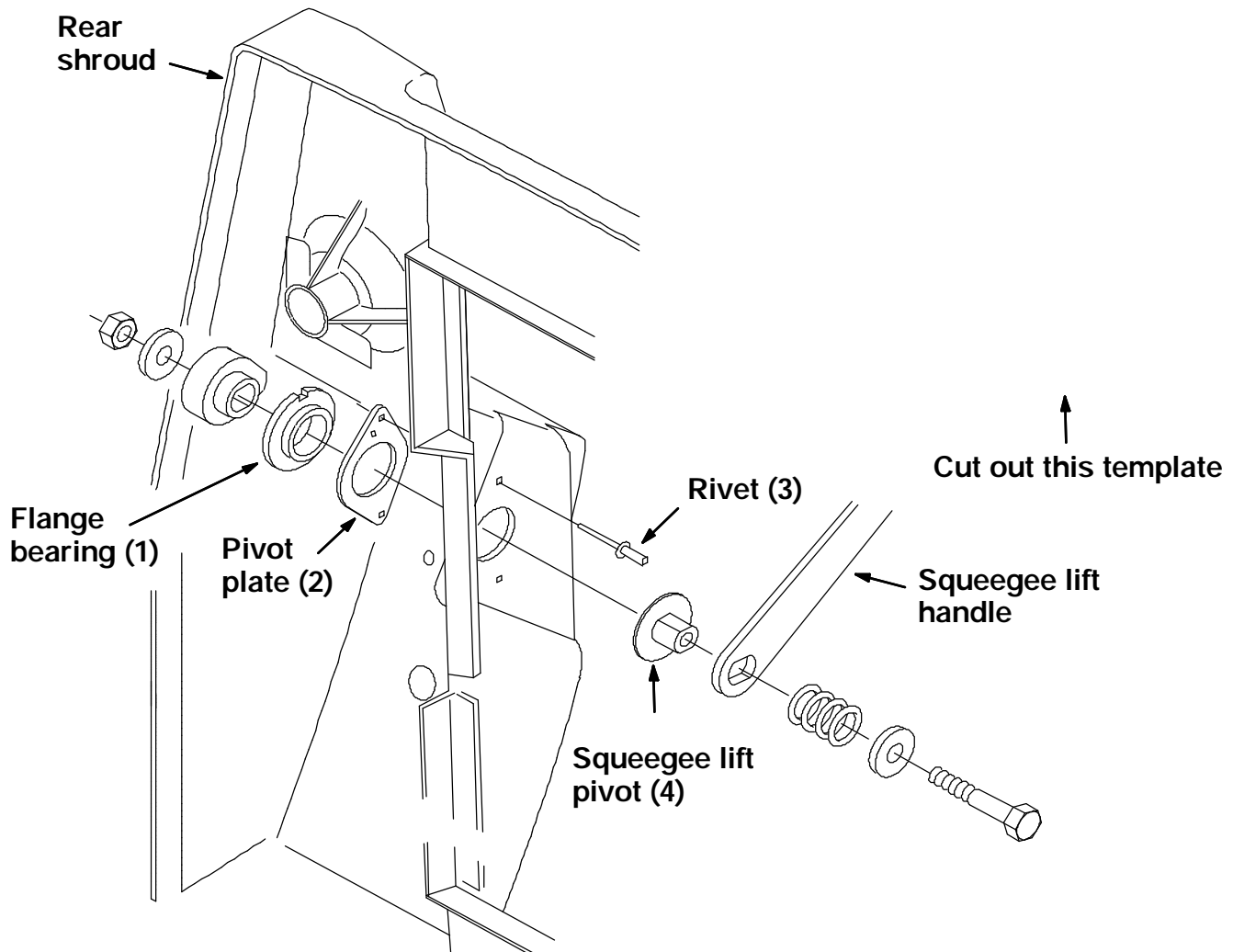


FIG. 1 - Squeegee Pivot Assembly

BILL OF MATERIALS FOR SQUEEGEE PIVOT REPLACEMENT KIT 222799

Ref.	TENNANT Part No.	Description	Qty.
1	222868	Flange bearing	1
2	222867	Squeegee pivot plate	1
3	34738	Pop rivet	2
4	222871	Squeegee lift pivot	1

TENNANT COMPANY
P. O. Box 1452
Minneapolis, MN 55440-1452